

**Lenovo™**

[www.lenovoretailsolution.com](http://www.lenovoretailsolution.com)



A photograph of a bar interior. In the foreground, a dark, rounded bottle holder labeled 'PINKIE' contains several wine bottles. Above it, a rack of glasses hangs from the ceiling. In the background, a bar counter and various bottles are visible. A semi-transparent grey rectangle is overlaid on the center of the image, containing the text 'Self Service Kiosk'. Orange decorative lines and dots are on the left and right sides of the overlay.

## Self Service Kiosk



# The Rise of Self Services Kiosk

## Customer Experiences

- **Scan and Go.** Make shopping faster, easier, and more convenient.
- **Queueing Management.** Enable customers in control of their schedules

## Corporate competitive

- Saves money on technology investment by eliminating cash and coin tender options and security scale
- Focus staff investment on sales value-added activities rather than dummy routines

## Covid “New Normal”

- ✓ Reduce interpersonal contacts and crowds



# Target Customers

---

## Retail

Reduce queuing times, optimize your labor force, and provide a seamless experience to your customers.

## Restaurant Version

Customers can spend up to 30% more when self-ordering through kiosk compared to traditional ordering. Customer satisfaction can also be comprehensively enhanced using smart devices.

## Extendable

Adoption of self-service kiosk reduces brick and mortar businesses **dependence on personnel and reduces waiting times**, thus **increasing efficiency and customer satisfaction**.

Public Sector



Ticketing



Entertainment



Hotel



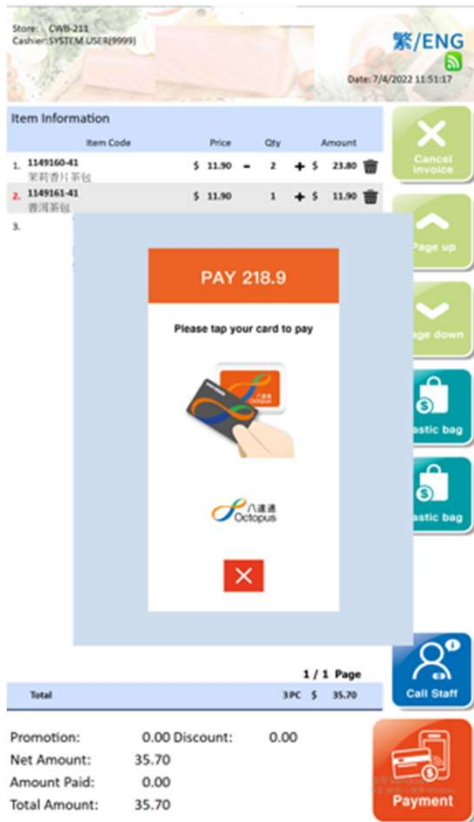
# Cashless Payment – Scan and Go

---



# Cashless Payment – Scan and Go

## Payment Processing



PAY 218.9

Please tap your card to pay



PAY 218.9

Please tap your card to pay



八達通 Octopus



PAY 218.9

Please scan QR code to pay



微信支付 WeChat Pay



# Queueing Management

## Kiosk Single Queue Interface

### Configurable Content

- Title
- Button Message
- Button Image
- Notice / Message
- Logo



# Queueing Management

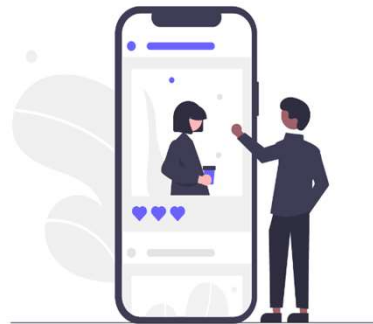
## Kiosk Multiple Queues Interface

### Configurable Content

- Number of queues
- Advertisement Image
- LOGO
- Notice / Message

### Customer Interface

A (Example)	B (Example)	C (Example)	D (Example)
A009	B002	-	-



### Ticket number display area

- Up to 5 queues

### Advertising display area

- Show in photo / video
- Support playlist schedule display
- Content hosted on cloud;



請輸入隊號  
Input Queue Group

您的輪候號碼  
Your Ticket Number

1

2

3

4

5

6

7

8

9

重設  
Reset

0

確定  
Enter

如所待之號碼已過有效期，請重新輸入。  
If the number is expired, please input again.  
Number will still be valid up to 5 places later,  
also that people take another ticket  
see approved for any inconvenience caused.

### Ticket collection area

- Input the number of person and the system will print the ticket for you



# Why Lenovo?

---

- **Smart and Contemporary design** –



- **Quality assurance** – Manufacture under Lenovo world class quality assurance system
- **Easy installation** - Zero Touch Installation, all hardware device's drivers are preloaded. Open-Box Hardware Installation takes less than 3mins.
- **Proven application capability** – Based in Hongkong with over 30years experiences focusing on Retails application solutions for Hong Kong and China.
- **Deploy whenever and wherever** – Plug a USB dongle and leverage 4/5G connectivity.
- **Flexible financial option** – DaaS option to cash flow and capex investment management

# Lenovo Self Services Kiosk Specifications

Modules	Items	HS-MT2420
Mainframe	CPU	Intel Skylake Core i5 CPU
	RAM	8 GB RAM
	Storage	128 GB SSD
Screen	Display	24" , Resolution: 1920*1080
	Touchscreen	Capacitive Multi-Touch Screen
Printer	Type	Thermal printer, Auto Cutter
	Paper Width	Compatible 80mm & 58mm
Scanner		180° , Support reading 1D & 2D barcodes
Connection	Ethernet	YES
	Wi-Fi	YES
	Bluetooth	YES (Option)
Interface	RS232	Serial Port*2
	USB	USB*4
Audio	Speaker	HIFI Speaker*2
OS		Windows POS Ready7/Windows 10 IoT/Linux
Optional Module	Weighting Appliance	YES, connect to external electronic scale
	Card Reader	YES, connect to card reader
	Status Indicator	YES, LED Indicator
	POS	YES, connect to POS

