

## Curtain MonGuard - FREE!

Prevent data leak through  
computer's screen

# Curtain MonGuard





# Data leakage incidents

Wednesday, May 28, 2008

Volume 1, No 189

第 189 卷

www.thestandard.com.hk

## FINANCIAL HUB DATA



tion of seven of the nine cases. Privacy Commissioner Roderick Woo Bun said yesterday he was shocked and disappointed that the authority did not contact his office over the new cases. "Due to the seriousness of the case, the commissioner has decided to write to Hospital Authority chief executive Shane Solomon, asking them to offer more detailed information so that appropriate action can be taken to prevent the occurrence of similar incidents," a spokesman for the office said.

Mr Solomon said eight of the losses had been reported to police and the other would be reported when details had been confirmed.

The lost devices included four USB flash drives and other devices including a laptop computer, an MP3 player and a digital camera. They contained data on 5,968 patients from five public hospitals, about half of them involving identifiable personal particulars such as identity

documents, medical records and said. It would make recommendations on ways to prevent how to make data inaccessible in case of theft, and whether there were gross staff to be punished.

The staff involved had the cases to the authority immediately after the incidents but it took out which reports were turned for patients and then to up action, Mr Solomon said. Frontline Doctors' Union Ernie Lo Chi-fung said



Shane Solomon

## Cathay Pacific Says 9.4 Million Affected by Data Breach

Airline's Five-Month Delay Before Public Disclosure Raises Concern

Jeremy Kirk (@jeremy\_kirk) • October 25, 2018



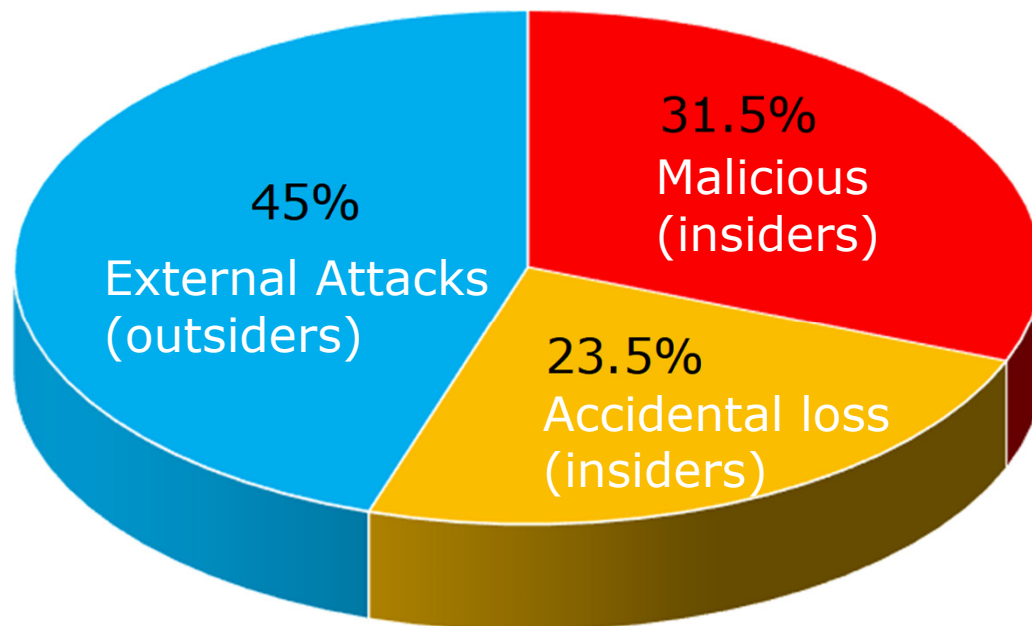
**See Also:** [Securing Organizations from Remote Desktop Protocol Exploits](#)

Hong Kong-based airline Cathay Pacific says the personal details of 9.4 million passengers were inappropriately accessed in March, a breach that was confirmed by the company in early May but only publicly revealed on Wednesday.



# Security surveys

- More and more surveys show that Insider Threats are the top source of security incidents
  - **55% (Insiders) VS 45% (Outsiders)**



- Insider breach should be higher than 55%
- Because it is not easy to discover insider copies information to external devices



# Security challenges



- It is hard to prevent users **taking photo/video against computer's screen** by using mobile phone when accessing sensitive information (e.g. personal information, CCTV footage, and etc)
- Due to COVID-19, more people **work from home**. Many companies allow users to connect with company's network through VPN. It increases the difficulty of preventing data leak through screen



# Security challenges



- **Online meeting** is another security challenge. When people need to show something to meeting participants (e.g. contracts, designs and training materials) during online meeting,

**how to protect the information shown to participants?**



## Curtain MonGuard - FREE!

Curtain MonGuard enables  
watermarks with user information  
showing on screen!

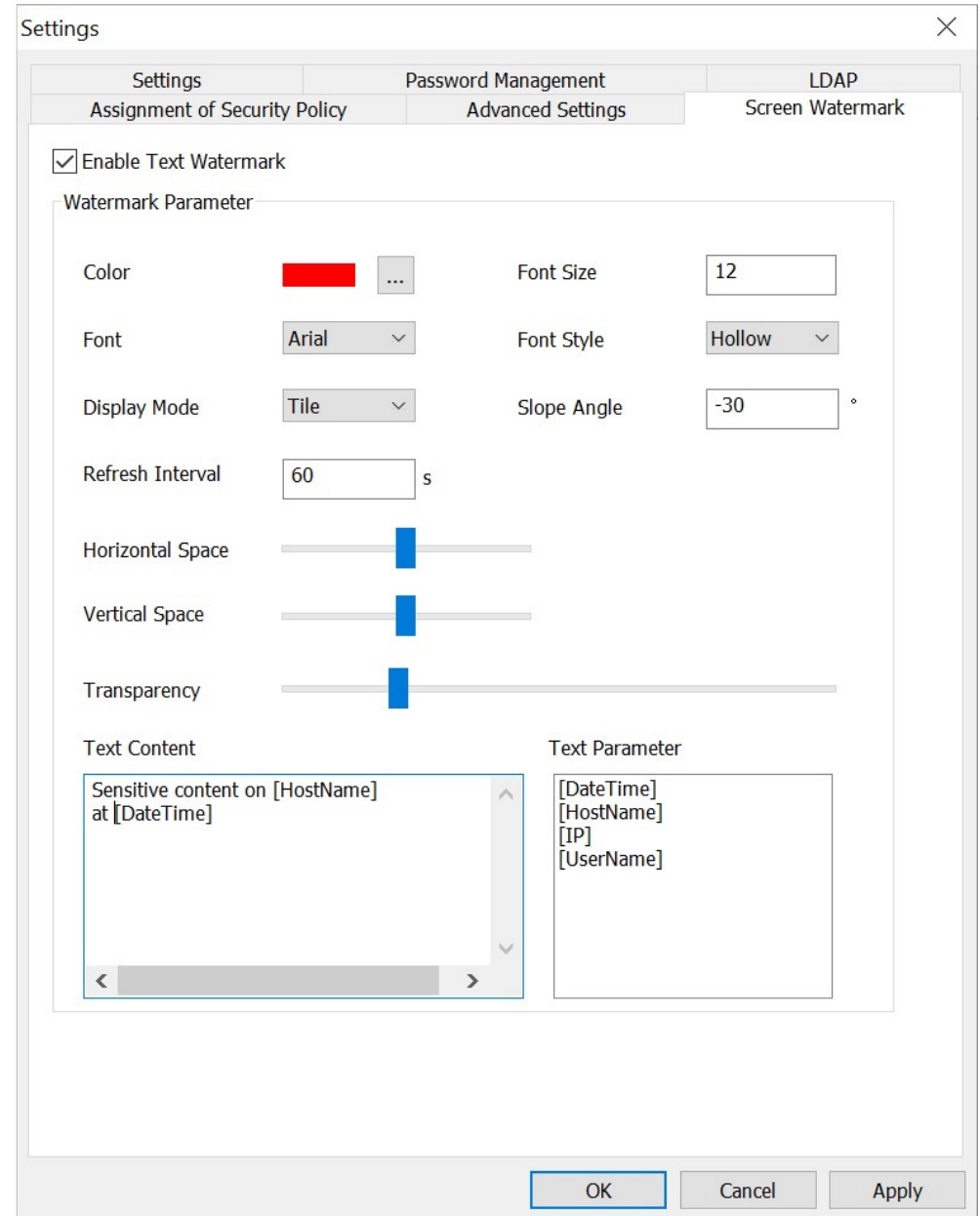
**It gets user's attention  
before they capture screen  
and share the information  
with other people!**





# Self-defined content of screen-watermark

- Self-defined content of screen-watermark
  - Date / Time
  - Computer name
  - Username
  - IP address
- Adjustable
  - Font color / size / style
  - Spacing
  - Transparency
  - Refresh interval
  - Display mode (tile or center)



The screenshot shows the 'Settings' window for the CURTAIN e-locker system, specifically the 'Screen Watermark' tab. The window is titled 'Settings' and has a close button (X) in the top right corner. It contains several tabs: 'Settings', 'Password Management', and 'LDAP'. Under 'Settings', there are sub-tabs: 'Assignment of Security Policy', 'Advanced Settings', and 'Screen Watermark'. The 'Screen Watermark' tab is active, showing the following options:

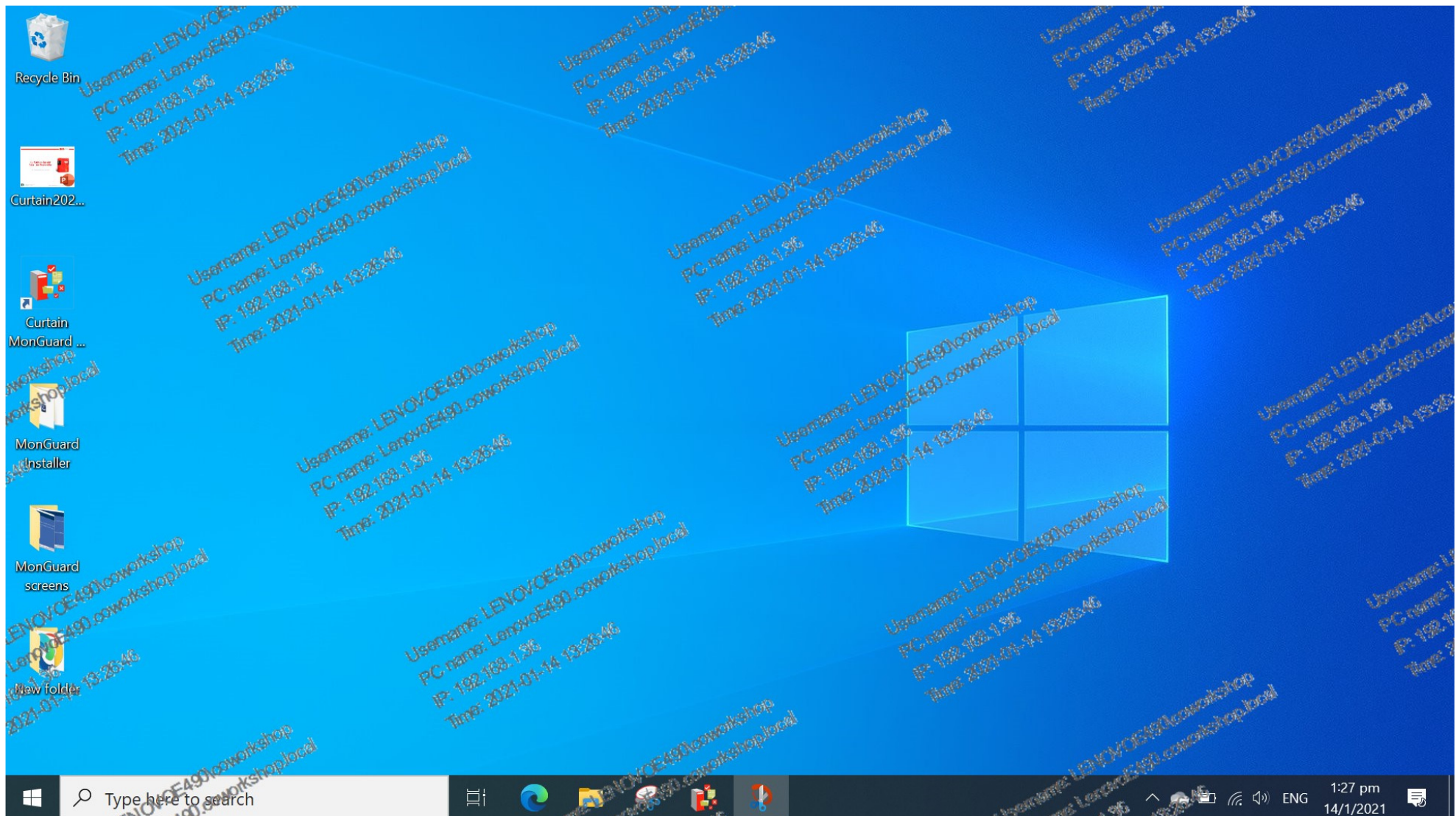
- ☒ Enable Text Watermark
- Watermark Parameter**
  - Color: A red color swatch with a dropdown arrow.
  - Font Size: A text input field containing '12'.
  - Font: A dropdown menu showing 'Arial'.
  - Font Style: A dropdown menu showing 'Hollow'.
  - Display Mode: A dropdown menu showing 'Tile'.
  - Slope Angle: A text input field containing '-30' with a degree symbol.
  - Refresh Interval: A text input field containing '60' followed by a 's' for seconds.
  - Horizontal Space: A horizontal slider bar.
  - Vertical Space: A vertical slider bar.
  - Transparency: A horizontal slider bar.
- Text Content**: A text area containing the text 'Sensitive content on [HostName] at [DateTime]'.
- Text Parameter**: A text area containing the text '[DateTime]', '[HostName]', '[IP]', and '[UserName]'.

At the bottom of the window, there are three buttons: 'OK', 'Cancel', and 'Apply'.



# Full screen-watermark OR specific applications

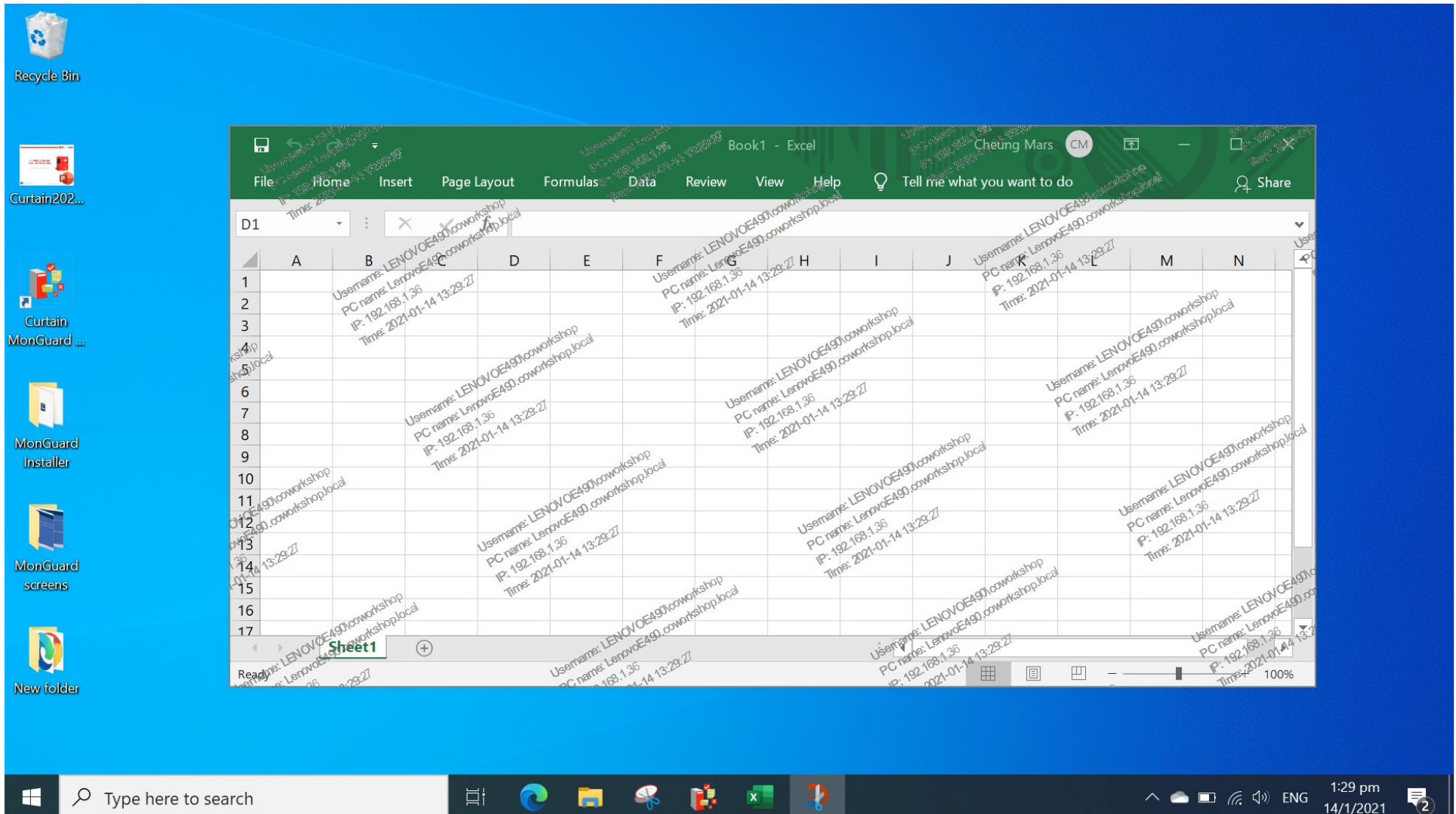
## Full Screen-watermark





# Full screen-watermark OR specific applications

## Application Screen-watermark





# Supported applications

We cover over 500 applications. Please refer to our website for the full list.

## Office Applications

- Adobe Acrobat
- Adobe Reader
- Microsoft Word
- Microsoft Excel
- Microsoft PowerPoint
- Microsoft Access
- Microsoft Visio
- Microsoft Project
- Microsoft Office Picture Manager
- Microsoft Internet Explorer
- Notepad, WordPad, Paint
- OpenOffice, WPS
- 7-zip, WinRAR
- PDFill, CutePDF
- Windows Picture and Fax Viewer
- Windows Media Player
- VLC media player
- Kodak imaging for Windows
- Google Chrome

## CAD/CAM

- AutoCAD
- AutoCAD LT
- Altium Designer
- SolidWorks
- SolidWorks Simulation
- SolidWorks EPDM
- 3ds Max
- 3DVIA
- DraftSight
- eDrawings
- Gerber AccuMark
- JewelCAD
- MasterCAM
- PADS, CAXA
- PTC Creo
- Rhinoceros
- Unigraphics NX
- ZWCAD (中望)

## Graphics Design

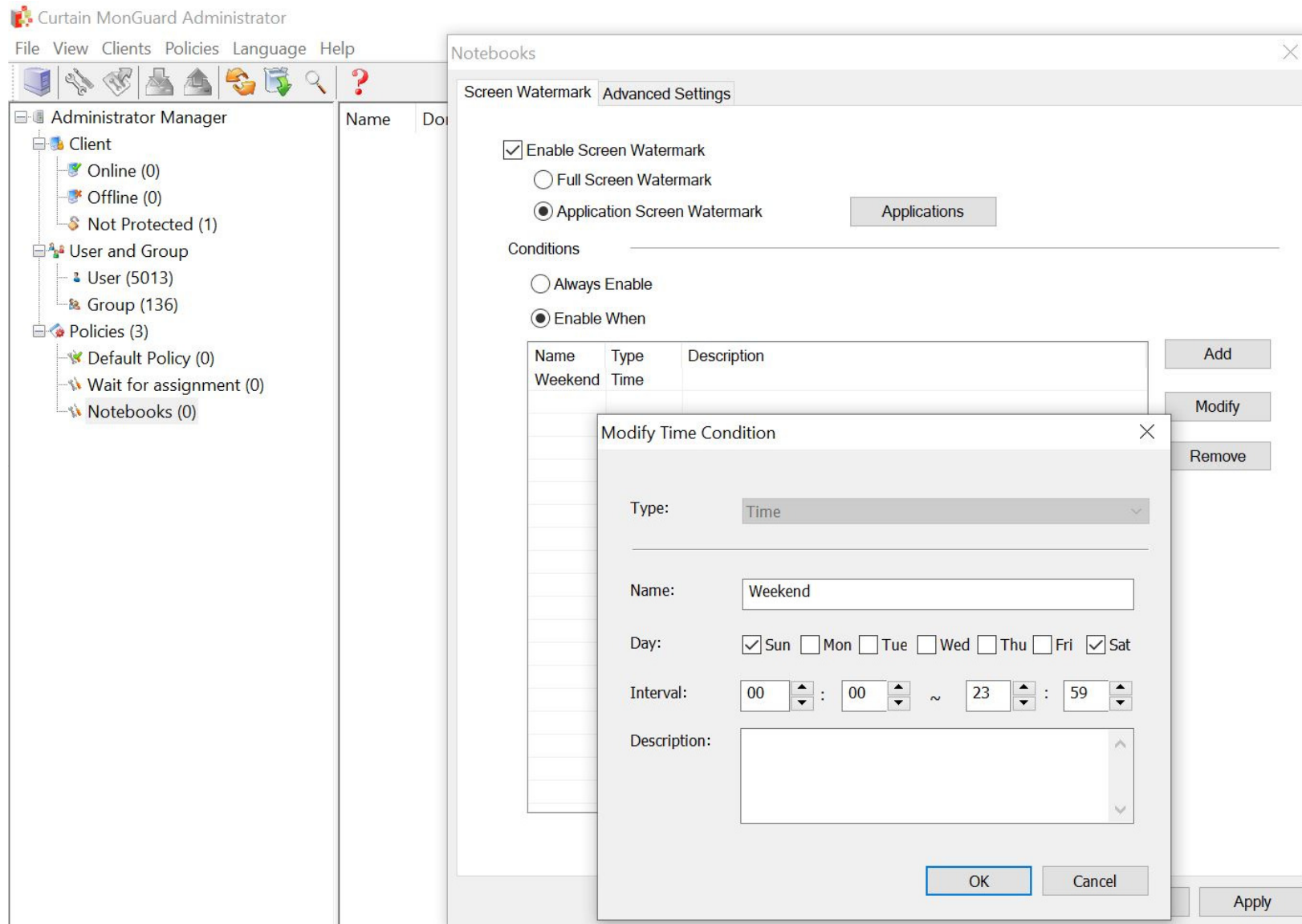
- Adobe Illustrator
- Adobe Photoshop
- CorelDRAW
- Adobe After Effects
- Adobe Lightroom





# Screen-watermark by condition

- Screen-watermark can be enabled for specific period of time





# Control policies

- Control policies can be assigned per Workstation OR User
- Support both Domain and Workgroup environment
- User/user group information can be imported from Active Directory through LDAP

## Settings

Port Exception		Share Exception		Password Management	
Local Encrypted Drive		File Operation Audit		Database	Send Re
Settings	Server Information		Network Drives Protection		Port an
Watermarks		LDAP	Assignment of Security Policy		

### Assignment of Security Policy

☐ Assigned by Computer

☒ Assigned by User

## LDAP

Enable LDAP ☒

LDAP Server Address

dc.test.com

LDAP Server Port

389

SSL ☐

Use Secure LDAP Connection ☒

LDAP Username

administrator

LDAP Password

••••••••

LDAP Search Base

dc=test, dc=com

LDAP Information Caching

1

Minutes

Test connection



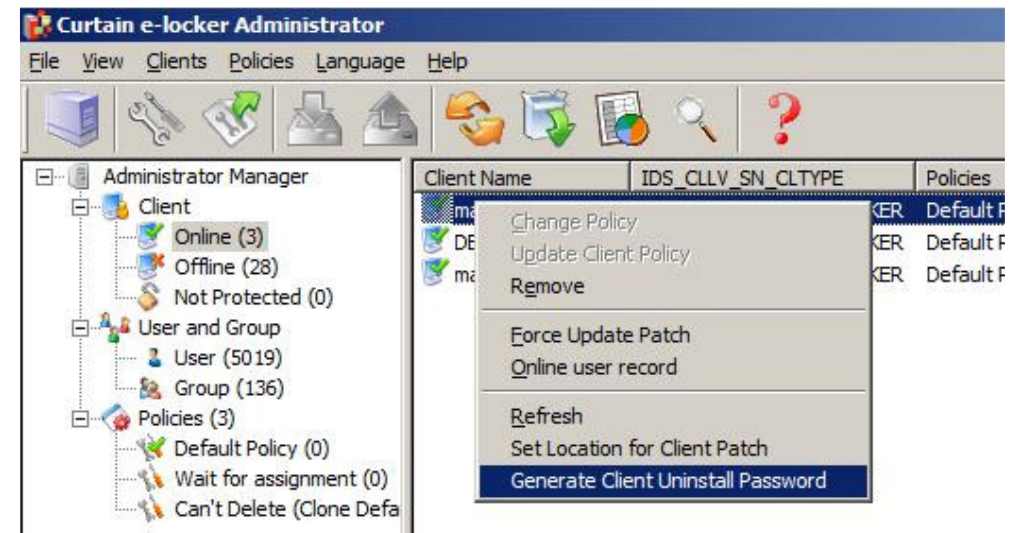
# Uninstall password for client

- Admin can enable password protection for uninstalling client program
- A unique password is generated in MonGuard Admin for each client. It prevents “universal password” for uninstallation of all clients

Client Password Management

Uninstall Password

☐ Password Protection





# Password protection for admin

- By default there is no password needed for MonGuard Admin
- For standalone PC, MonGuard Admin and Client can be installed on the same machine. It is recommended to enable password protection for Admin program for preventing users to change control policy
- For enterprise customers, they can create admin accounts and delegate permissions to different admin groups

## Administrator Password Management

- ☐ No Password
- ☐ Password Protection
- ☒ Administrator Login ID

Reset Password





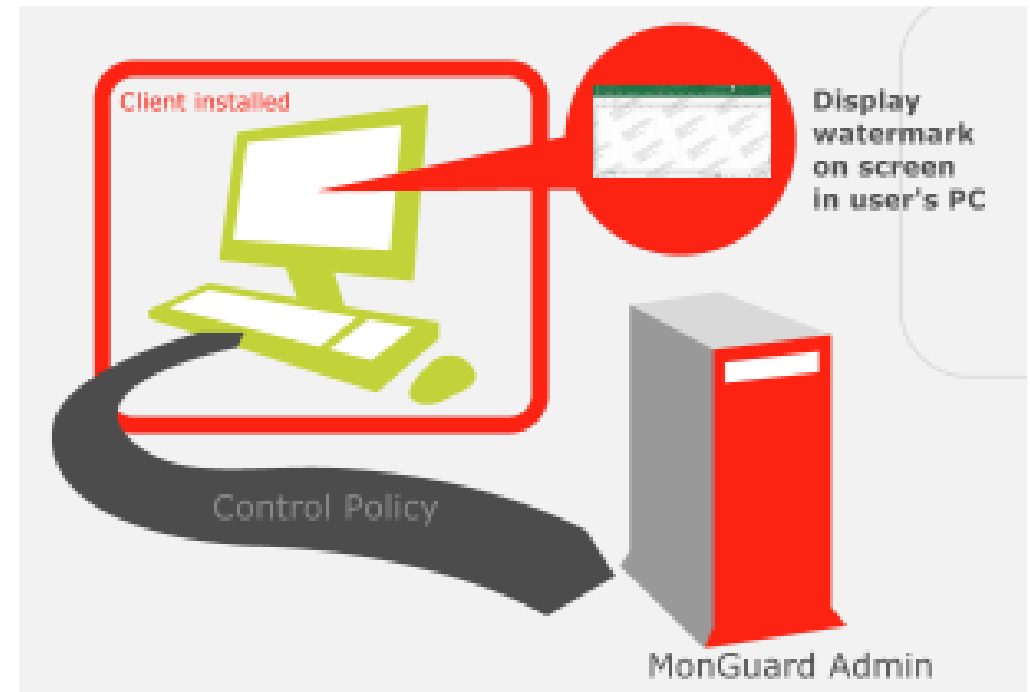
# Basic components

## ▪ **Curtain MonGuard Client**

When administrators want to display watermark on screen in user's computers, Curtain MonGuard Client must be installed in those computers.

## ▪ **Curtain MonGuard Admin**

Curtain MonGuard Admin is mainly for administrators to define Curtain control policies centrally. In general, only one Curtain MonGuard Admin is needed in a company.





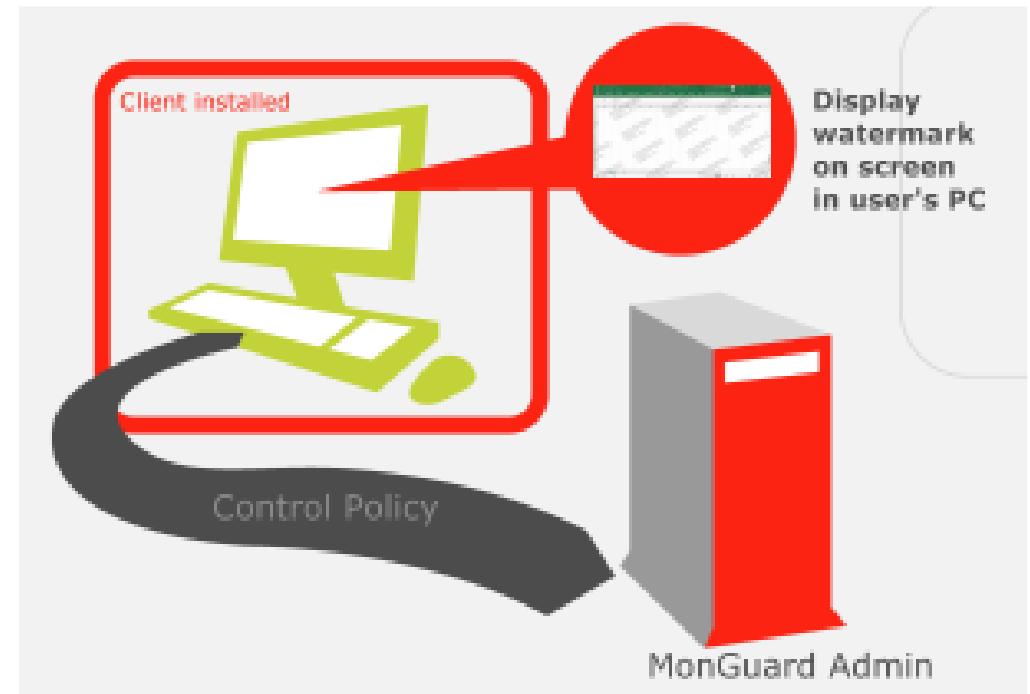
# System requirements

## **Curtain MonGuard Client**

- Intel Pentium or above processor
- WinXP/Vista/Server 2003 (32-bit)
- Win7/Win8/Win10/Server 2008/2012/2016/2019 (32/64-bit)
- 256MB RAM
- 200MB Hard Disk (in NTFS)
- TCP/IP network

## **Curtain MonGuard Admin**

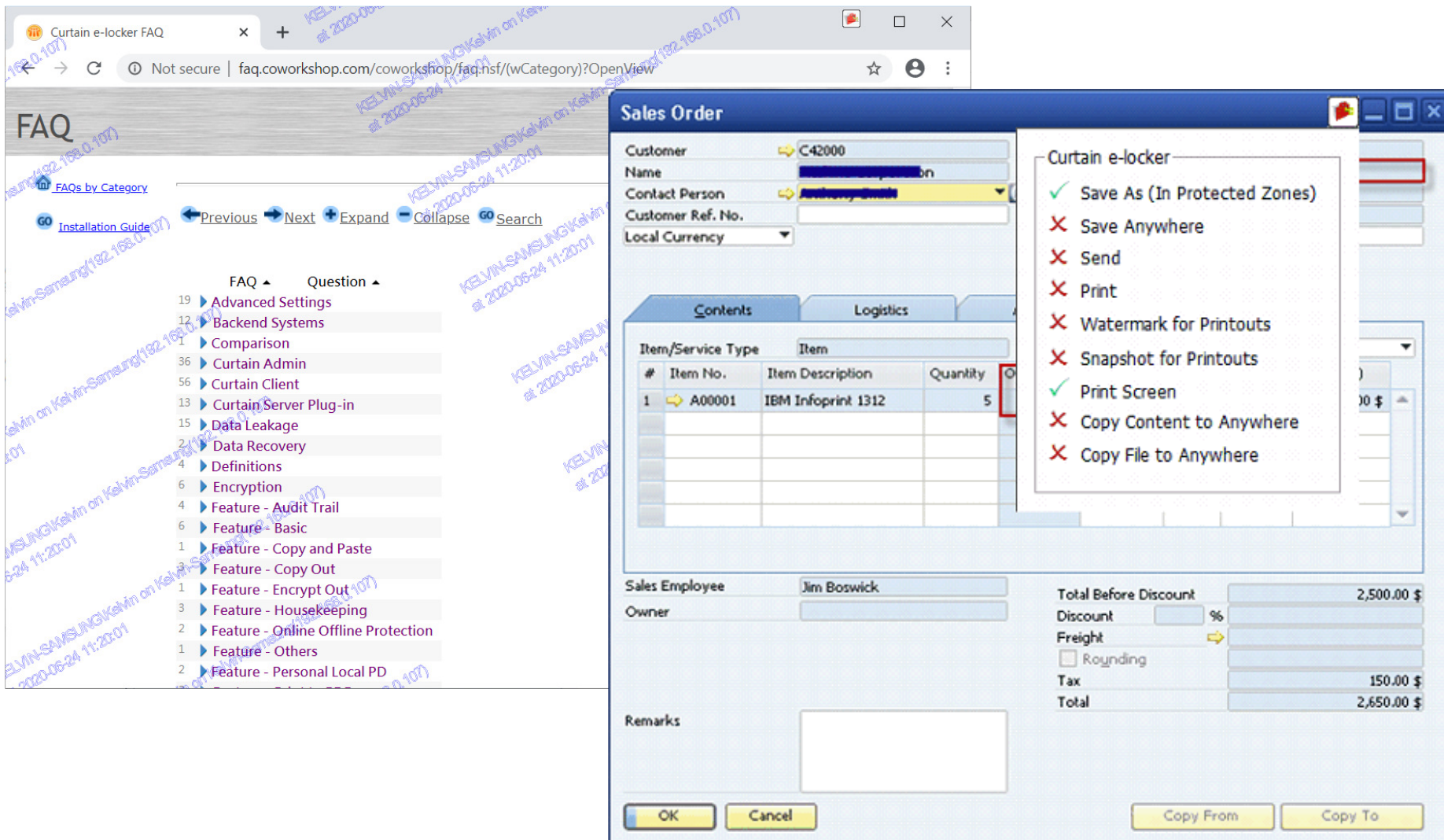
- Intel Pentium or above processor
- WinXP/Vista/Server 2003 (32-bit)
- Win7/Win8/Win10/Server 2008/2012/2016/2019 (32/64-bit)
- 256MB RAM
- 200MB Hard Disk (in NTFS)
- TCP/IP network





# Secure self-developed systems

The software can be easily integrated with your own systems to secure the information. Contact us for details!



The screenshot displays a web browser window with the address bar showing 'faq.coworkshop.com/coworkshop/faq.nsf/(wCategory)?OpenView'. The page title is 'FAQ' and it includes a search bar and a list of FAQ categories. Overlaid on the browser is a 'Sales Order' application window. The 'Sales Order' window has a 'Contents' tab selected, showing a table with the following data:

#	Item No.	Item Description	Quantity
1	A00001	IBM Infoprint 1312	5

The 'Sales Order' window also includes fields for 'Customer' (C42000), 'Name', 'Contact Person', 'Customer Ref. No.', and 'Local Currency'. At the bottom, there are fields for 'Sales Employee' (Jim Boswick), 'Owner', and 'Remarks'. A security menu is open over the 'Sales Order' window, listing the following options:

- ✓ Save As (In Protected Zones)
- ✗ Save Anywhere
- ✗ Send
- ✗ Print
- ✗ Watermark for Printouts
- ✗ Snapshot for Printouts
- ✓ Print Screen
- ✗ Copy Content to Anywhere
- ✗ Copy File to Anywhere

The 'Sales Order' window also displays a summary of the order total:

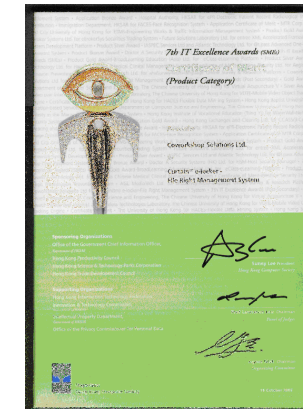
Total Before Discount	2,500.00 \$
Discount	%
Freight	
<input type="checkbox"/> Rounding	
Tax	150.00 \$
Total	2,650.00 \$



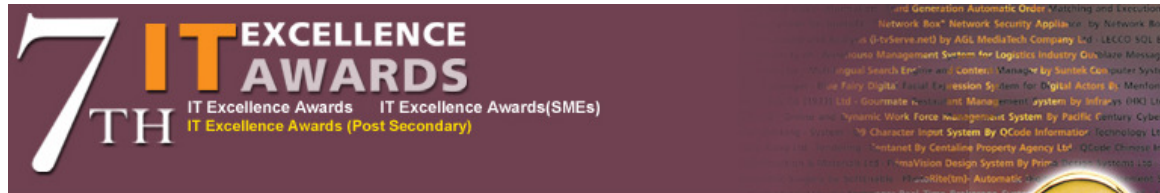
# Awards



## "IT Excellence Award"



## Asia Finalist in the Best Security of the GSC 2010

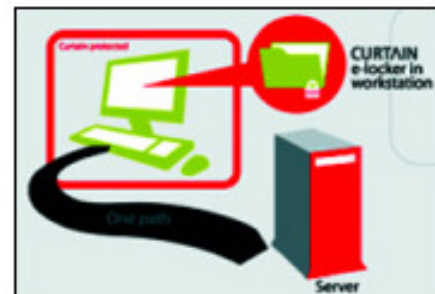


### Curtain™ e-locker - File Right Management System

Submitted by Coworkshop Solutions Ltd



Curtain™ e-locker is a File Rights Management system that prevents sensitive files from leaking out of an organization. Curtain™ e-locker allows users to access and edit such files by using native software such as MS Word, MS Excel, AutoCAD and SolidWorks but prevents printing, saving as, or sending the files to external sources such as floppies, USB disk, CD-R/RW or Internet mail.



### Judges' Comments

"An interesting software solution, allowing files to be uploaded only back to the server or document management system they were downloaded from."

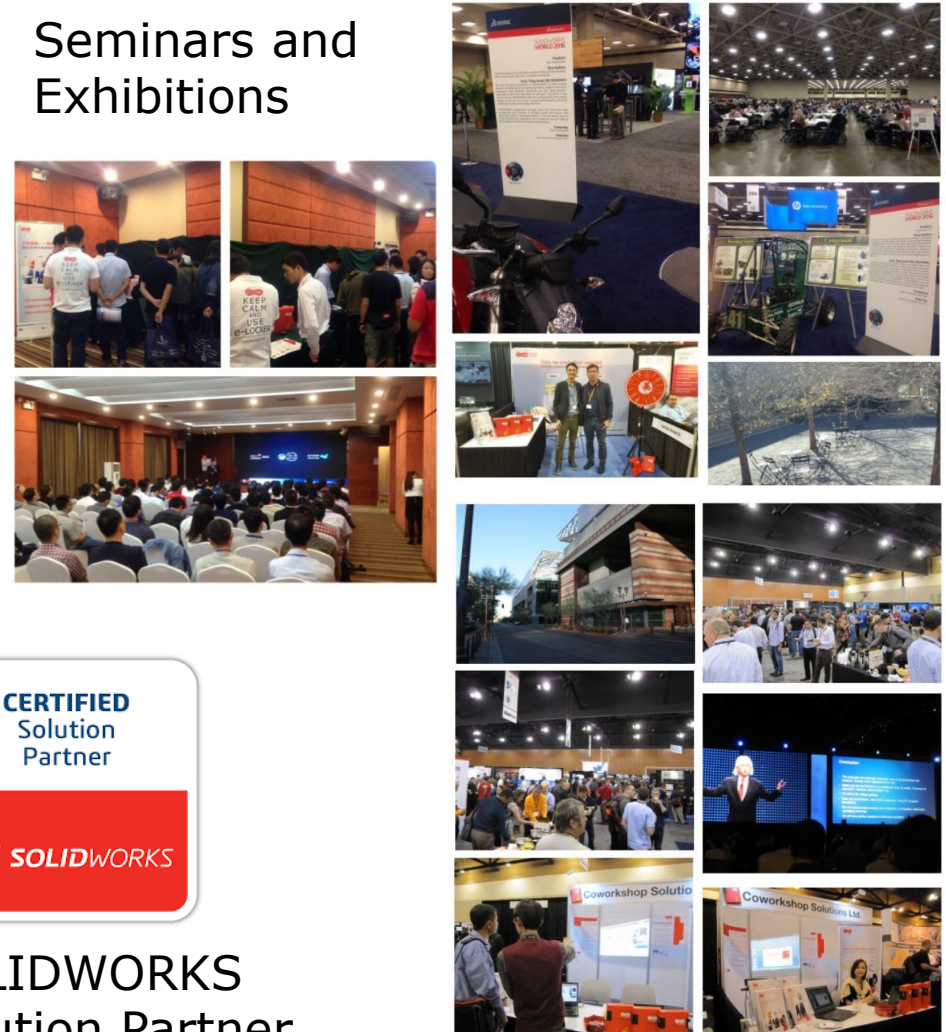


# Partners

Over 100 resellers and partners around the world



## Seminars and Exhibitions



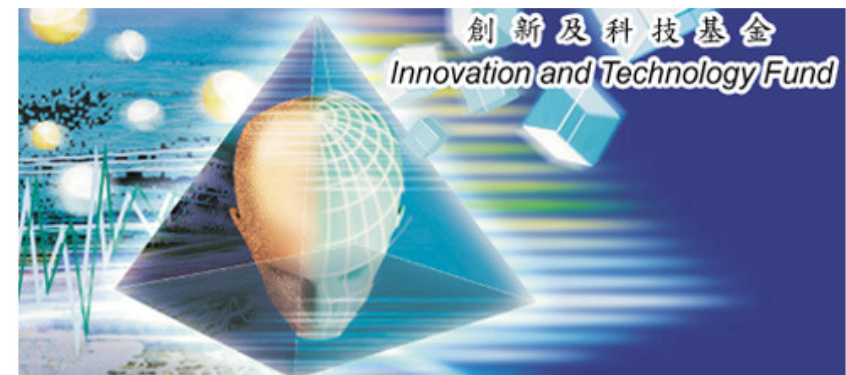
## CERTIFIED Solution Partner

## SOLIDWORKS Solution Partner



# About Coworkshop

- Coworkshop was established in 2001.
- Office in Hong Kong and ShenZhen
- Awarded in 2001 by Hong Kong Science and Technology Parks (HKSTP) to be a member of the Incu-Tech Program.
- Supported by the Hong Kong Government – Innovation and Technology Fund in the years of 2003 and 2004.





# Download Now !

---

[coworkshop.com/MonGuard](http://coworkshop.com/MonGuard)



## Conclusion

Sensitive information can be leaked out of the company without your knowledge. When you know the leakage, it is already too late.



Let's protect your  
valuable information!!!



# Thank You

---

[coworkshop.com](http://coworkshop.com)